



**HANDS & ART**  
TILE SERVICE

*FULL QUALITY PROCESS*



With over **8 years of experience**, we've installed more than *3,000 backsplashes, 430 bathrooms and 2,000 floors*. Discover our total quality process, from the preparation stages to the final tile installation.

*\*We are licensed and insured!*

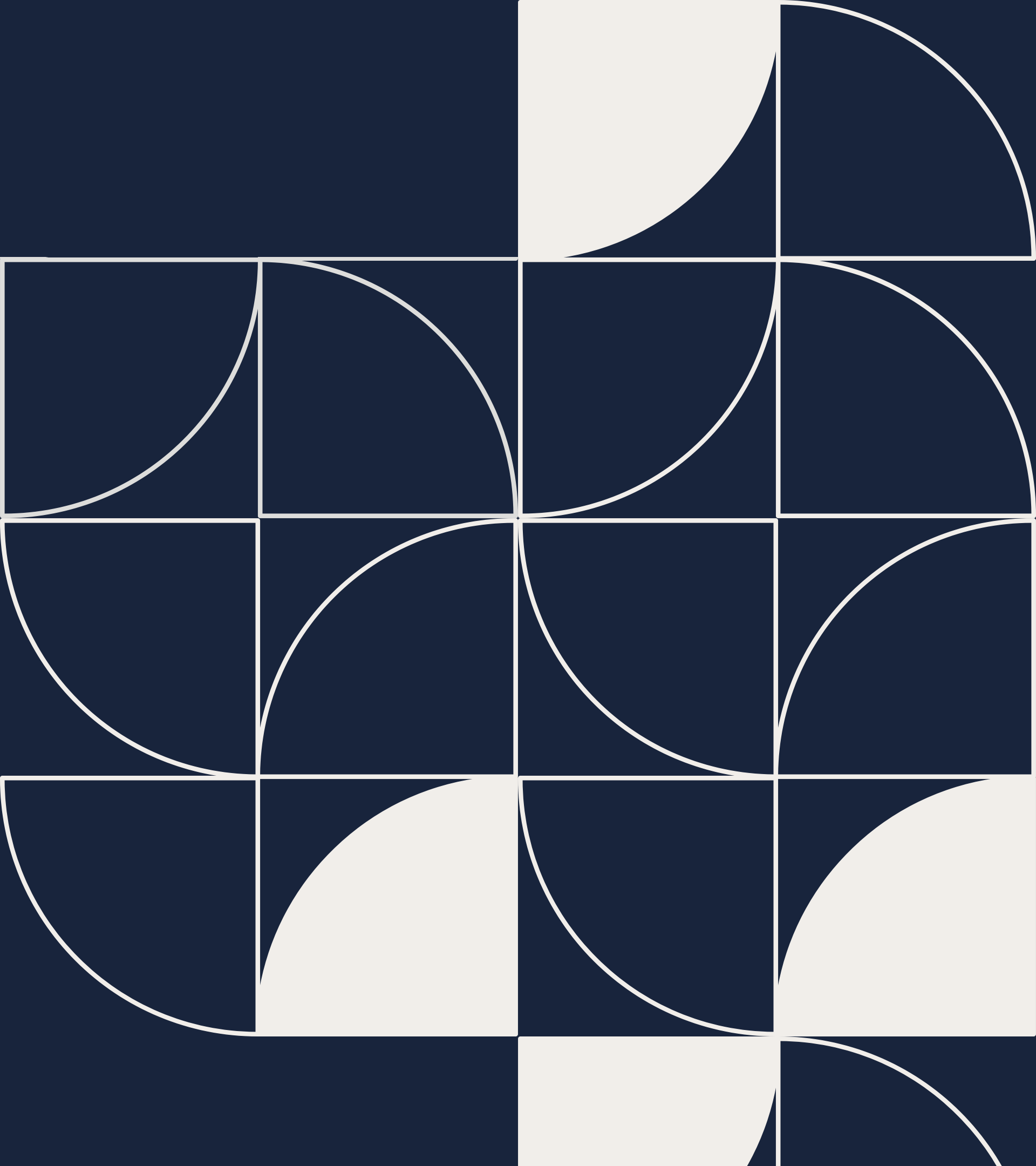


*BATHROOM REMODELING*

# DAY 01

We will demo the old tile.  
We will seal the air conditioner outlets, cover all surrounding furniture with plastic and protect the entire path to the bathroom with cloths or paper, ensuring the protection and cleanliness of your floor and furniture. We clean up every day.





# DAY 02

We will replace the drain, all visible plumbing and the old valves for new ones.

\*We always leave the walls opened overnight to ensure that the new plumbing and valves are dry and in perfect working order. We clean up every day.

# DAY 03

We will build the curb and close the walls. We use FOUR layers of protection to ensure your bathroom will be 100% waterproof.

First, we install a membrane from the Schluter System brand, then we install another membrane made from PVC.





We close the walls with pressed cement boards – Hardie Backer, also waterproof.

And finally, we apply the RedGard product to all corners, screws, inside the niche, and one foot from the floor, ensuring the perfect preparation for your bathroom. We clean up every day.

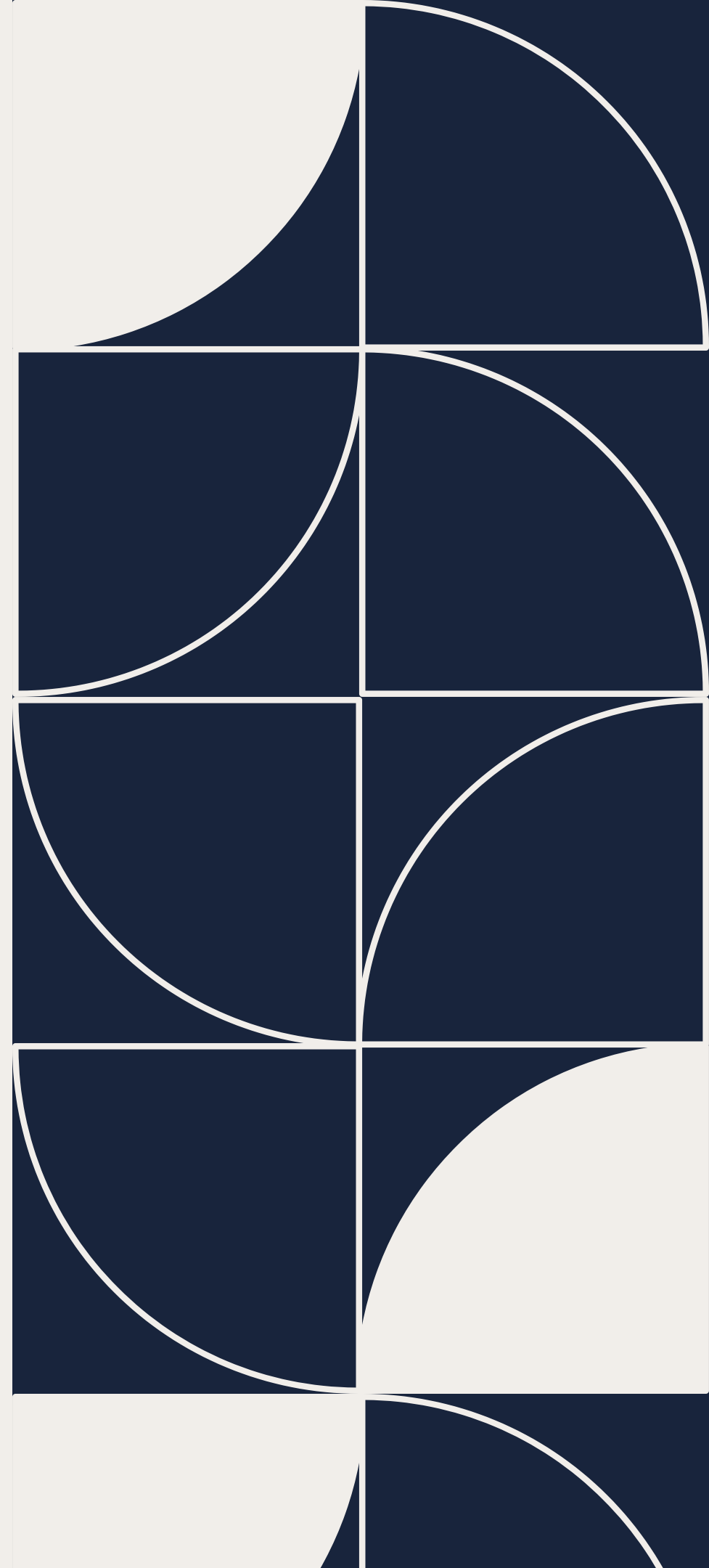


# DAY 04

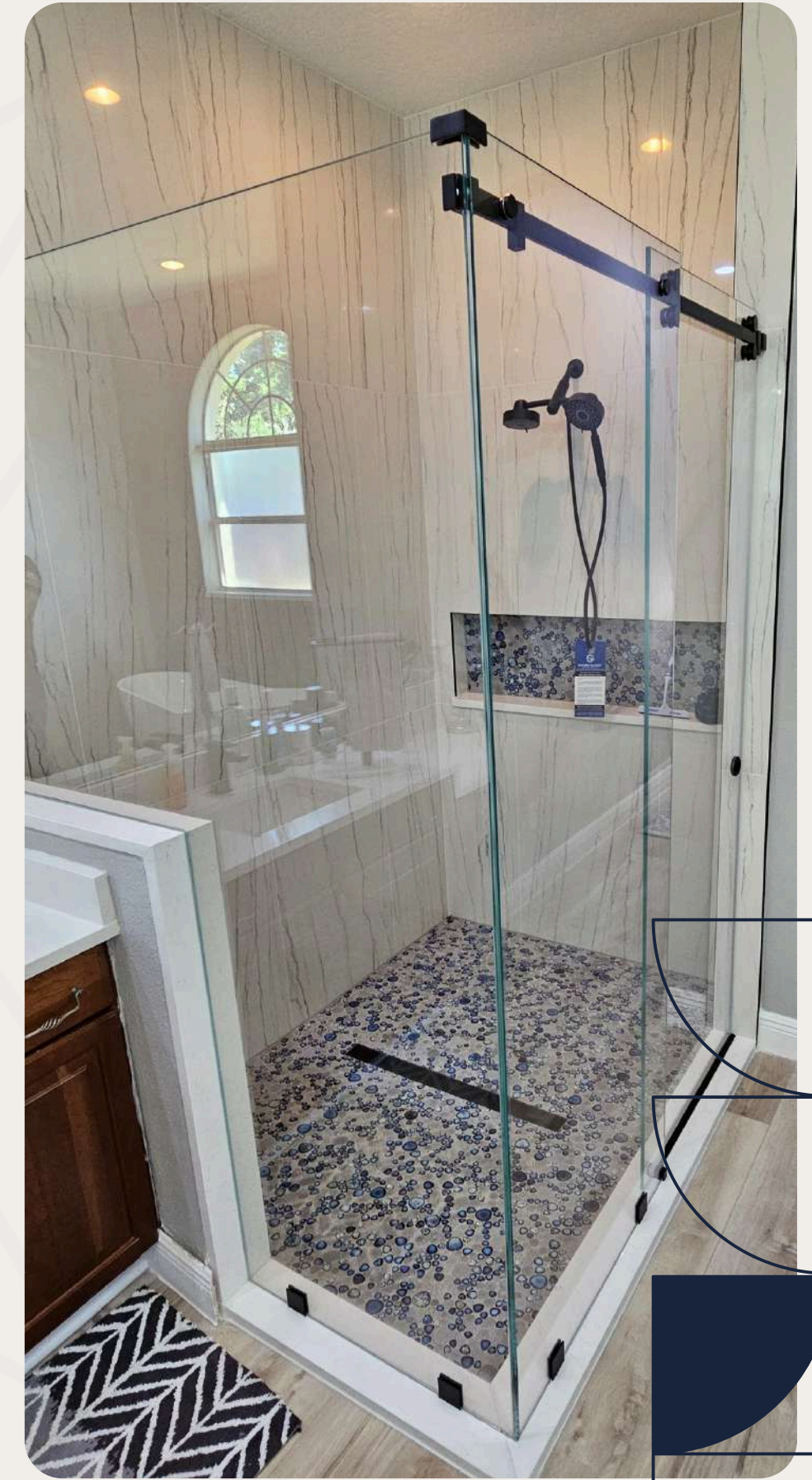
We will start the tile installation. Depending on the size of the project, it may take 2 to 4 days.

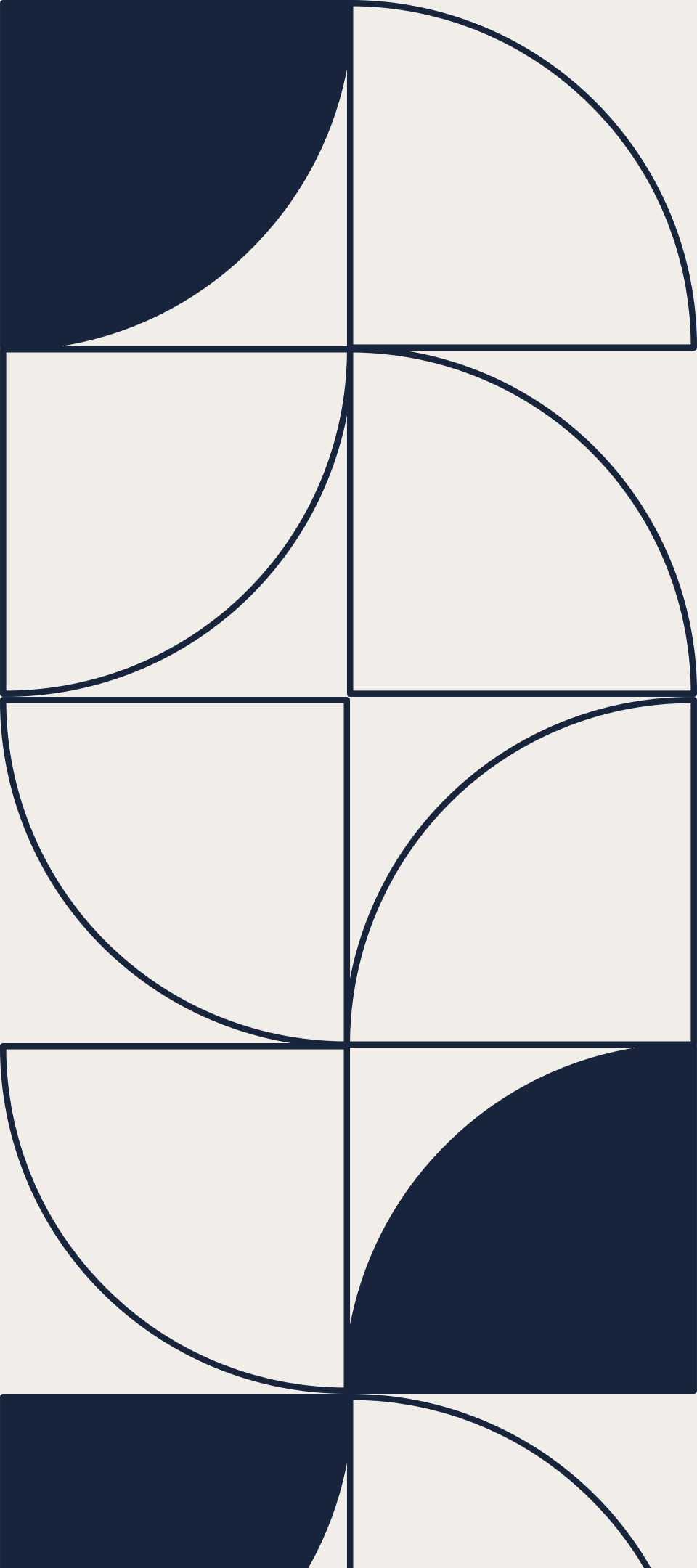
We always use clips with a 1/16 grout joint so that the pieces are 100% flat and with the minimum grout width. We use the wet saw machine to ensure that the cuts will be perfect and without any chips in the final finish. All cuts are made outside the house.

After finishing the installation, we will apply the grout, always done on the next day. We clean up every day.









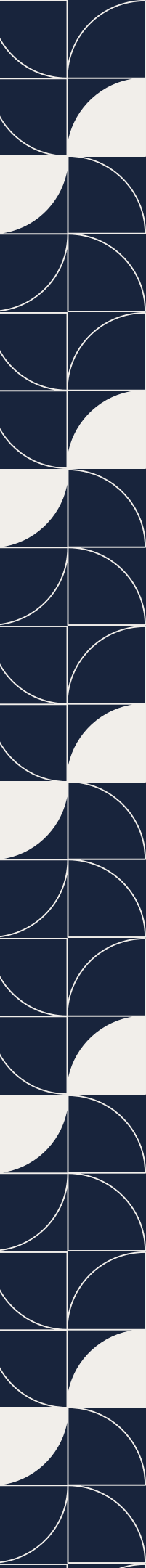
*Note:* After installing the side walls and curb, the Glass Doors technician will be able to come to take measurements and check the square.

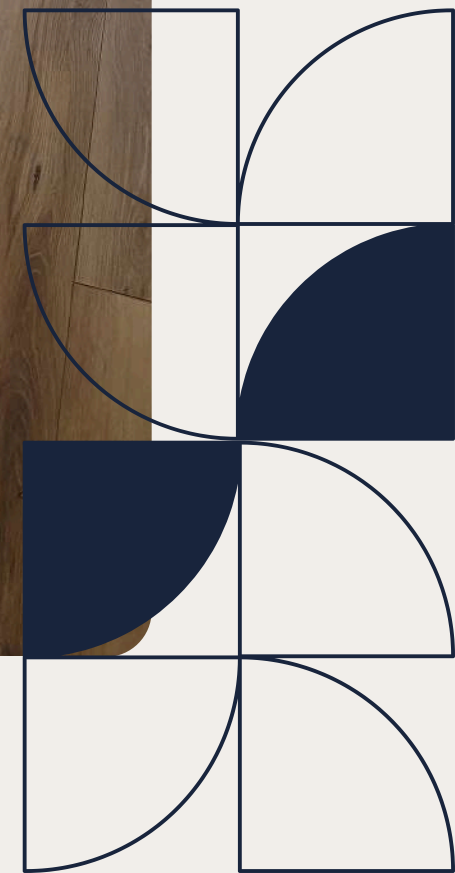
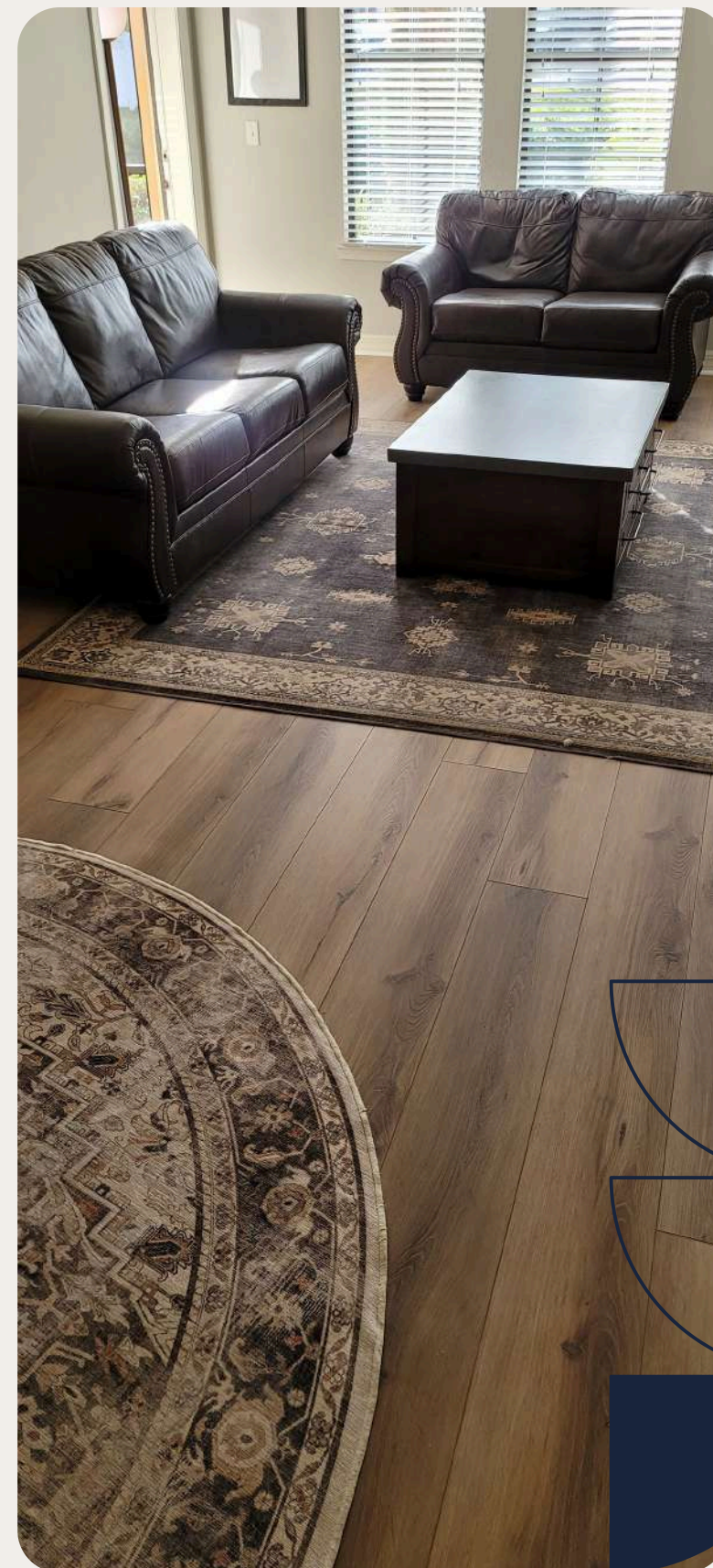
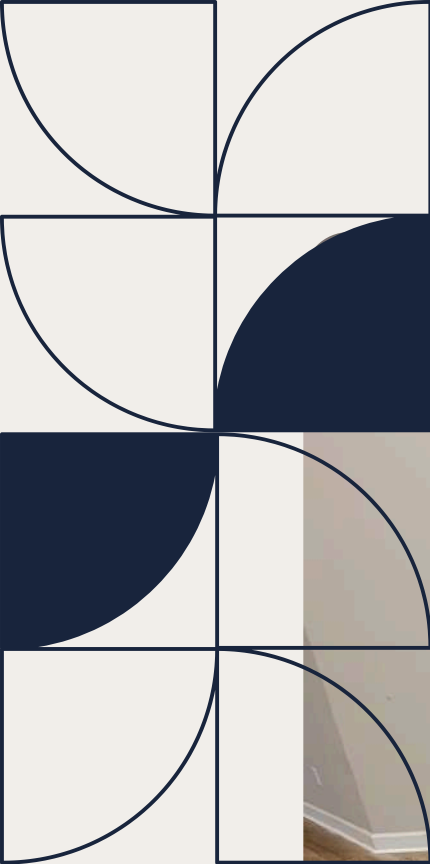
And finally, on the last day, we install the fixtures, such as the valve handle and shower head. We let everything ready for the Glass doors to be installed

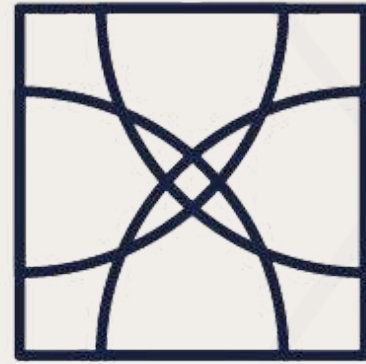
*TILE & VINYL*

For Tile and Vinyl installation the preparation and care are the same. Also, we prepare the subfloor, scrape it, treat the cracks with isolation membrane and in some cases we use self-leveling cement to make sure everything is flat and ready for a perfect installation.

For Vinyl installation (on concrete subfloor only) we install an underlayment plastic barrier to ensure advanced moisture protection for your floors.







**HANDS & ART**  
TILE SERVICE